



DEPARTMENT OF THE ARMY
U.S. ARMY CORPS OF ENGINEERS, ST. PAUL DISTRICT
332 MINNESOTA STREET, SUITE E1500
ST. PAUL, MN 55101-1323

MVP

28 March 2024

MEMORANDUM FOR RECORD

SUBJECT: US Army Corps of Engineers (Corps) Approved Jurisdictional Determination in accordance with the "Revised Definition of 'Waters of the United States'"; (88 FR 3004 (January 18, 2023) as amended by the "Revised Definition of 'Waters of the United States'; Conforming" (8 September 2023),¹ [MVP-2004-0160414-KDZ MFR 1 of 1](#)

BACKGROUND. An Approved Jurisdictional Determination (AJD) is a Corps document stating the presence or absence of waters of the United States on a parcel or a written statement and map identifying the limits of waters of the United States on a parcel. AJDs are clearly designated appealable actions and will include a basis of JD with the document.² AJDs are case-specific and are typically made in response to a request. AJDs are valid for a period of five years unless new information warrants revision of the determination before the expiration date or a District Engineer has identified, after public notice and comment, that specific geographic areas with rapidly changing environmental conditions merit re-verification on a more frequent basis.³

On January 18, 2023, the Environmental Protection Agency (EPA) and the Department of the Army ("the agencies") published the "Revised Definition of 'Waters of the United States,'" 88 FR 3004 (January 18, 2023) ("2023 Rule"). On September 8, 2023, the agencies published the "Revised Definition of 'Waters of the United States'; Conforming", which amended the 2023 Rule to conform to the 2023 Supreme Court decision in *Sackett v. EPA*, 598 U.S., 143 S. Ct. 1322 (2023) ("*Sackett*").

This Memorandum for Record (MFR) constitutes the basis of jurisdiction for a Corps AJD as defined in 33 CFR §331.2. For the purposes of this AJD, we have relied on Section 10 of the Rivers and Harbors Act of 1899 (RHA),⁴ the 2023 Rule as amended, as well as other applicable guidance, relevant case law, and longstanding practice in evaluating jurisdiction.

1. SUMMARY OF CONCLUSIONS.

¹ While the Revised Definition of "Waters of the United States"; Conforming had no effect on some categories of waters covered under the CWA, and no effect on any waters covered under RHA, all categories are included in this Memorandum for Record for efficiency.

² 33 CFR 331.2.

³ Regulatory Guidance Letter 05-02.

⁴ USACE has authority under both Section 9 and Section 10 of the Rivers and Harbors Act of 1899 but for convenience, in this MFR, jurisdiction under RHA will be referred to as Section 10.

MVP

SUBJECT: 2023 Rule, as amended, Approved Jurisdictional Determination in Light of *Sackett v. EPA*, 143 S. Ct. 1322 (2023), [MVP-2004-0160414-KDZ](#)

- a. Provide a list of each individual feature within the review area and the jurisdictional status of each one (i.e., identify whether each feature is/is not a water of the United States and/or a navigable water of the United States).
 - i. [Wetland 1 \(3,411 sq. ft.\), non-jurisdictional](#)
 - ii. [Wetland 4 \(4,418 sq. ft.\), non-jurisdictional](#)
 - iii. [Wetland 7 \(7,263 sq. ft.\), non-jurisdictional](#)
 - iv. [Wetland 8 \(51,658 sq. ft.\), non-jurisdictional](#)
 - v. [Wetland 9 \(14,542 sq. ft.\), non-jurisdictional](#)
 - vi. [Wetland 11A \(17,348 sq. ft.\), non-jurisdictional](#)
 - vii. [Wetland 11B \(46,304 sq. ft.\), non-jurisdictional](#)
 - viii. [Wetland 12 \(7,895 sq. ft.\), non-jurisdictional](#)
 - ix. [Wetland 13 \(13,422 sq. ft.\), non-jurisdictional](#)

2. REFERENCES.

- a. “Revised Definition of ‘Waters of the United States,’” 88 FR 3004 (January 18, 2023) (“2023 Rule”)
 - b. “Revised Definition of ‘Waters of the United States’; Conforming” 88 FR [61964](#) (September 8, 2023))
 - c. *Sackett v. EPA*, 598 U.S. ___, 143 S. Ct. 1322 (2023)
3. REVIEW AREA. [The review area is limited to Wetlands 1, 4, 7, 8, 9, 11A, 11B, 12, and 13 on the on the approximately 200-acre property as identified on the attached labeled MVP-2004-0160414-KDZ, AJD Figure 1. The review area is located at 44.439738 N, -89.732586W in the Village of Biron, Wood County, Wisconsin. There are no other JDs associated with the review area.](#)
4. NEAREST TRADITIONAL NAVIGABLE WATER (TNW), THE TERRITORIAL SEAS, OR INTERSTATE WATER TO WHICH THE AQUATIC RESOURCE IS CONNECTED. [N/A](#)
5. FLOWPATH FROM THE SUBJECT AQUATIC RESOURCES TO A TNW, THE TERRITORIAL SEAS, OR INTERSTATE WATER. [N/A](#)

MVP

SUBJECT: 2023 Rule, as amended, Approved Jurisdictional Determination in Light of *Sackett v. EPA*, 143 S. Ct. 1322 (2023), [MVP-2004-0160414-KDZ](#)

6. SECTION 10 JURISDICTIONAL WATERS⁵: Describe aquatic resources or other features within the review area determined to be jurisdictional in accordance with Section 10 of the Rivers and Harbors Act of 1899. Include the size of each aquatic resource or other feature within the review area and how it was determined to be jurisdictional in accordance with Section 10.⁶ [N/A](#)
7. SECTION 404 JURISDICTIONAL WATERS: Describe the aquatic resources within the review area that were found to meet the definition of waters of the United States in accordance with the 2023 Rule as amended, consistent with the Supreme Court's decision in *Sackett*. List each aquatic resource separately, by name, consistent with the naming convention used in section 1, above. Include a rationale for each aquatic resource, supporting that the aquatic resource meets the relevant category of "waters of the United States" in the 2023 Rule as amended. The rationale should also include a written description of, or reference to a map in the administrative record that shows, the lateral limits of jurisdiction for each aquatic resource, including how that limit was determined, and incorporate relevant references used. Include the size of each aquatic resource in acres or linear feet and attach and reference related figures as needed.
 - a. Traditional Navigable Waters (TNWs) (a)(1)(i): [N/A](#)
 - b. The Territorial Seas (a)(1)(ii): [N/A](#)
 - c. Interstate Waters (a)(1)(iii): [N/A](#)
 - d. Impoundments (a)(2): [N/A](#)
 - e. Tributaries (a)(3): [N/A](#)
 - f. Adjacent Wetlands (a)(4): [N/A](#)
 - g. Additional Waters (a)(5): [N/A](#)

8. NON-JURISDICTIONAL AQUATIC RESOURCES AND FEATURES

⁵ 33 CFR 329.9(a) A waterbody which was navigable in its natural or improved state, or which was susceptible of reasonable improvement (as discussed in § 329.8(b) of this part) retains its character as "navigable in law" even though it is not presently used for commerce, or is presently incapable of such use because of changed conditions or the presence of obstructions.

⁶ This MFR is not to be used to make a report of findings to support a determination that the water is a navigable water of the United States. The district must follow the procedures outlined in 33 CFR part 329.14 to make a determination that water is a navigable water of the United States subject to Section 10 of the RHA.

- a. Describe aquatic resources and other features within the review area identified in the 2023 Rule as amended as not “waters of the United States” even where they otherwise meet the terms of paragraphs (a)(2) through (5). Include the type of excluded aquatic resource or feature, the size of the aquatic resource or feature within the review area and describe how it was determined to meet one of the exclusions listed in 33 CFR 328.3(b).⁷ [N/A](#)

- b. Describe aquatic resources and features within the review area that were determined to be non-jurisdictional because they do not meet one or more categories of waters of the United States under the 2023 Rule as amended (e.g., tributaries that are non-relatively permanent waters; non-tidal wetlands that do not have a continuous surface connection to a jurisdictional water).

[Wetlands 1, 4, 7, 8, 9, 11A, 11B, 12, and 13 are not TNW's, territorial seas, or interstate waters and therefore are not \(a\)\(1\) waters. All 9 wetlands are depressional features lacking a surface connection to any downstream surface water. A desktop review of the USGS topographic map, NHD layer, Wisconsin Wetland Inventory, LiDAR elevation data, and Google Earth aerial imagery indicate that all 9 wetlands are depressional wetlands surrounded by upland. All 9 wetlands do not physically abut a relatively permanent paragraph \(a\)\(2\) impoundment or a jurisdictional \(a\)\(3\) tributary and are not separated from a jurisdictional water by a natural berm, bank, dune, or similar natural landform. Wetland 8 was closely analyzed by the Corps for a potential surface connection to the Cranberry Marsh Canal, however, the wetland is separated from the watercourse by uplands/existing historic fill material without culverts present which eliminates a surface connection. All 9 wetlands are in close proximity to the Wisconsin River \(TNW\) or the Cranberry Marsh Canal. However, there are no ditches, swales, pipes, or culverts that connect all 9 wetlands to downstream jurisdictional waters. All 9 wetlands are non-tidal wetland that do not have a continuous surface connection to a relatively permanent jurisdictional water and as such does not meet the definition of adjacent and cannot be evaluated as \(a\)\(4\) adjacent wetlands; therefore, Wetlands 1, 4, 7, 8, 9, 11A, 11B, 12, and 13 are not jurisdictional under the 2023 Revised Definition of 'Waters of the United States'; Conforming" 88 FR 61964 Final Rule.](#)

9. DATA SOURCES. List sources of data/information used in making determination. Include titles and dates of sources used and ensure that information referenced is available in the administrative record.

⁷ 88 FR 3004 (January 18, 2023)

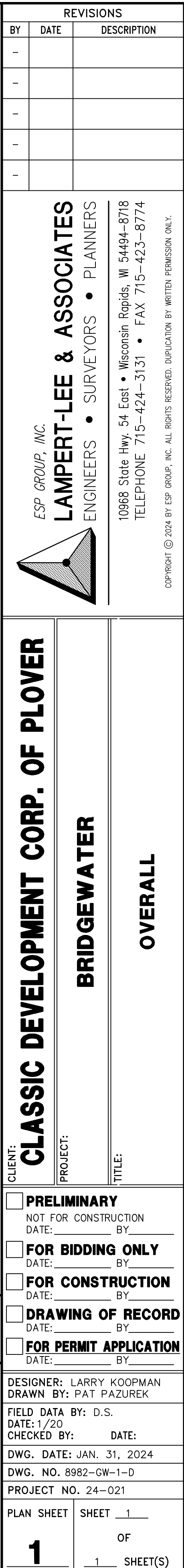
MVP

SUBJECT: 2023 Rule, as amended, Approved Jurisdictional Determination in Light of *Sackett v. EPA*, 143 S. Ct. 1322 (2023), [MVP-2004-0160414-KDZ](#)

- a. Corps desktop evaluation conducted on March 21, 2024 utilizing USGS topographic map, NHD layer, Wisconsin Wetland Inventory, Web Soil Survey, LiDAR elevation data, site photographs, and WDNR Surface Water Viewer.
- b. Star Environmental, Inc. Wetland Delineation Reports dated October 14, 2004, and February 25, 2010.
- c. Google Earth imagery dated 2010, 2011, 2015, 2018, 2019, 2020, 2021, and 2022. Accessed March 21, 2023.

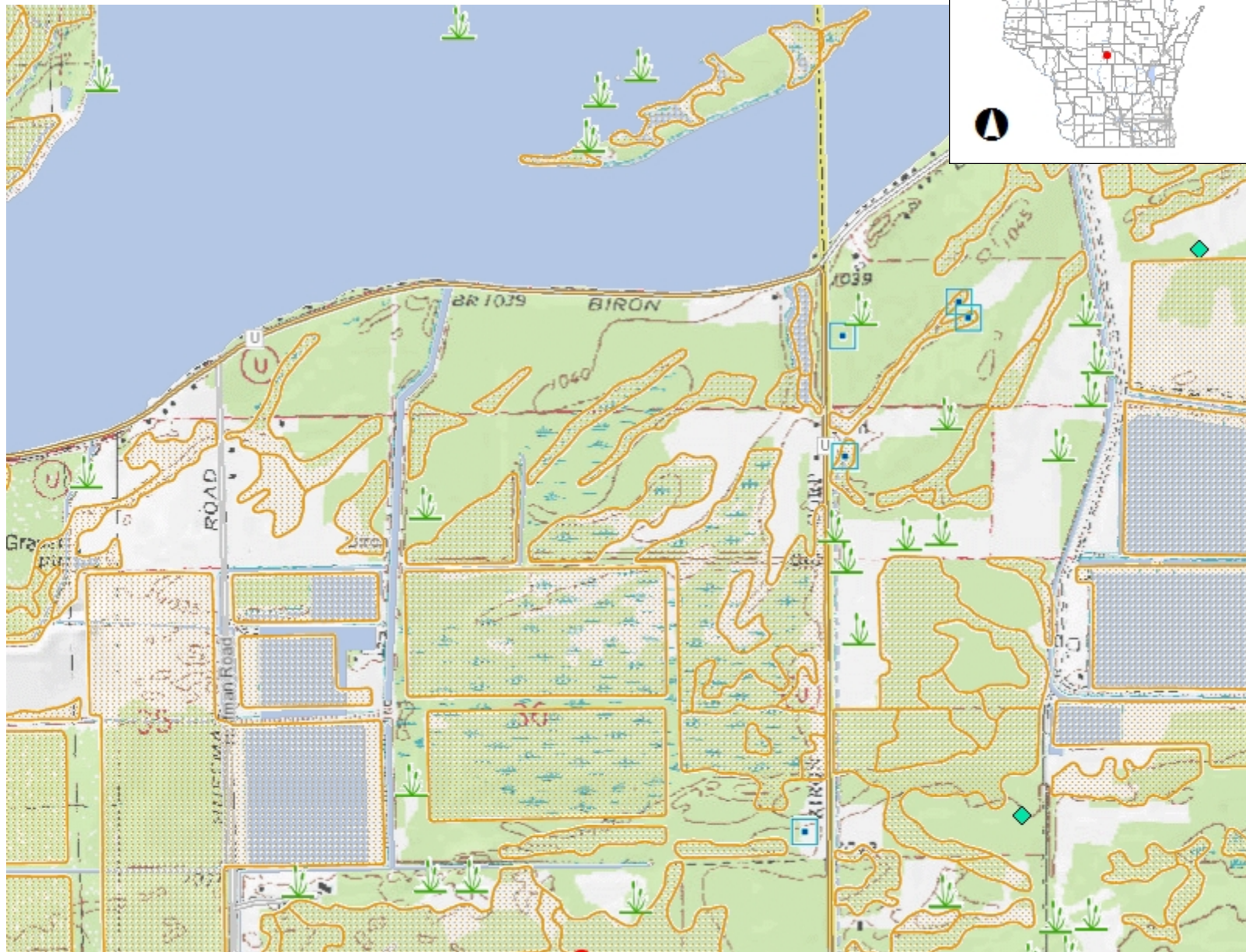
10. OTHER SUPPORTING INFORMATION. [N/A](#)

11. NOTE: The structure and format of this MFR were developed in coordination with the EPA and Department of the Army. The MFR's structure and format may be subject to future modification or may be rescinded as needed to implement additional guidance from the agencies; however, the approved jurisdictional determination described herein is a final agency action.





Surface Water Data Viewer Map



Legend

- Lake Class Areas
- Riverine/ditch Class Areas
- Wetland Class Areas
- Wetland Class Points
 - Dammed pond
 - Excavated pond
 - Filled/draind wetland
 - Wetland too small to delineate
 - Filled excavated pond
- Filled Points
- Wetland Class Areas
- Filled Areas
- Lake Class Areas
- Riverine/ditch Class Areas
- Wetland Class Areas
- Wetland Class Points
 - Dammed pond
 - Excavated pond
 - Filled/draind wetland
 - Wetland too small to delineate
 - Filled excavated pond
- Filled Points
- Wetland Class Areas
- Filled Areas
- Wetland Identifications and Confirmations
- Municipality
- State Boundaries
- County Boundaries
- Major Roads
 - Interstate Highway
 - State Highway
 - US Highway
- County and Local Roads
 - County HWY

0.5 0 0.25 0.5 Miles

NAD_1983_HARN_Wisconsin_TM

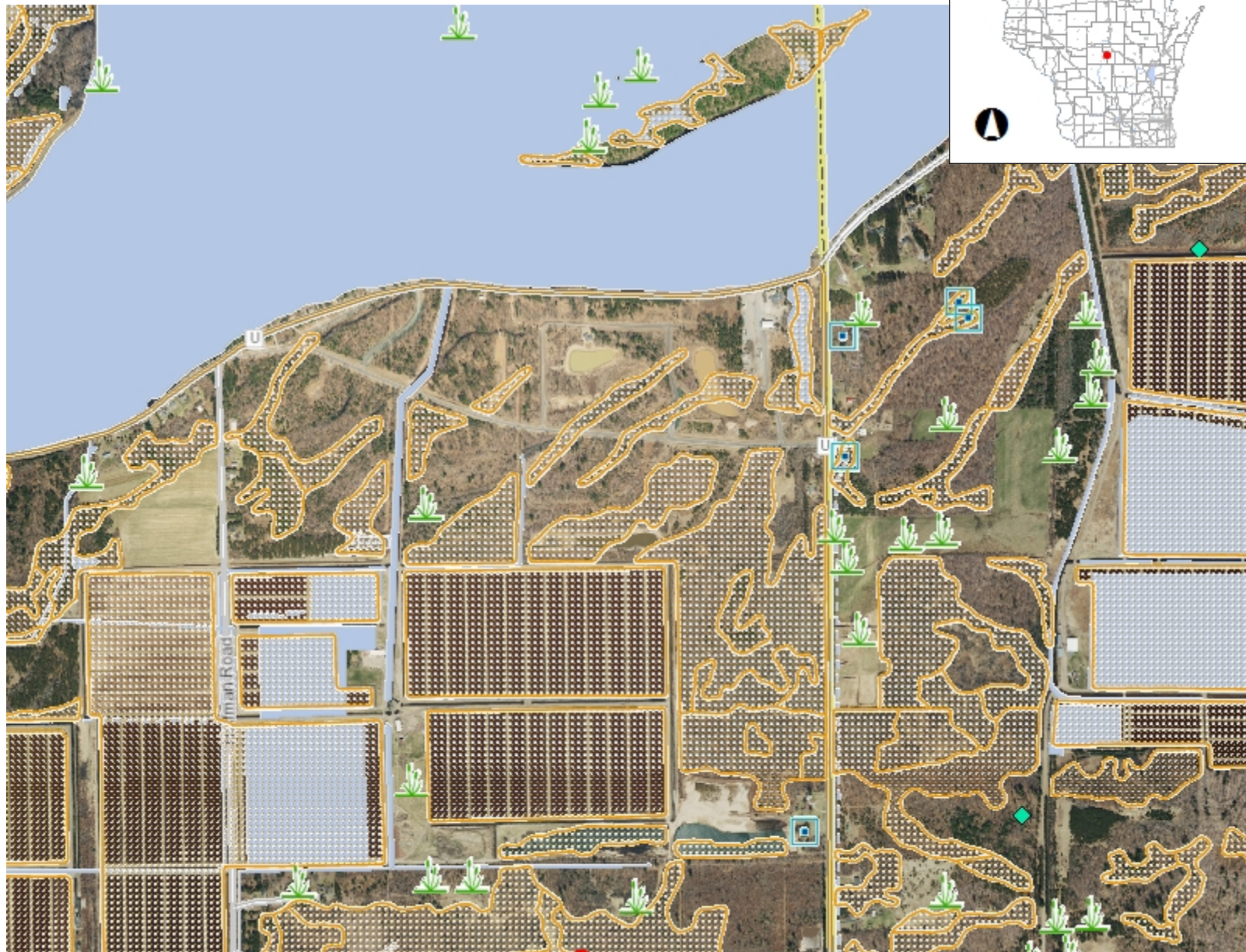
1: 15,840

DISCLAIMER: The information shown on these maps has been obtained from various sources, and are of varying age, reliability and resolution. These maps are not intended to be used for navigation, nor are these maps an authoritative source of information about legal land ownership or public access. No warranty, expressed or implied, is made regarding accuracy, applicability for a particular use, completeness, or legality of the information depicted on this map. For more information, see the DNR Legal Notices web page: <http://dnr.wi.gov/legal/>

Notes



Surface Water Data Viewer Map



Legend

- Lake Class Areas
- Riverine/ditch Class Areas
- Wetland Class Areas
- Wetland Class Points
 - Dammed pond
 - Excavated pond
 - Filled/draind wetland
 - Wetland too small to delineate
 - Filled excavated pond
- Filled Points
- Wetland Class Areas
- Filled Areas
- Lake Class Areas
- Riverine/ditch Class Areas
- Wetland Class Areas
- Wetland Class Points
 - Dammed pond
 - Excavated pond
 - Filled/draind wetland
 - Wetland too small to delineate
 - Filled excavated pond
- Filled Points
- Wetland Class Areas
- Filled Areas
- Wetland Identifications and Confirmations
- Municipality
- State Boundaries
- County Boundaries
- Major Roads
 - Interstate Highway
 - State Highway
 - US Highway
- County and Local Roads
- County BNM

0.5 0 0.25 0.5 Miles

NAD_1983_HARN_Wisconsin_TM

1: 15,840

DISCLAIMER: The information shown on these maps has been obtained from various sources, and are of varying age, reliability and resolution. These maps are not intended to be used for navigation, nor are these maps an authoritative source of information about legal land ownership or public access. No warranty, expressed or implied, is made regarding accuracy, applicability for a particular use, completeness, or legality of the information depicted on this map. For more information, see the DNR Legal Notices web page: <http://dnr.wi.gov/legal/>

Notes